

A scenic view of a paved path leading through a lush garden. The path is flanked by well-manicured green lawns and vibrant flower beds. Large, mature trees with dense foliage line the path, creating a canopy effect. The overall atmosphere is peaceful and well-maintained.

Corporate Partners

BROOKGREEN
Gardens[®]

www.brookgreen.org

Why Partner?

Brookgreen Garden benefits greatly from your gift.

Your gift supports the mission of Brookgreen Gardens and directly impacts everything we do across the Garden's- from research and horticulture to special exhibitions and education programs. We hope you will consider a Corporate Partnership gift to Brookgreen gardens, which will help us continue offering the same high-quality programming you have come to know and love.



As a Corporate Partner your benefits include:

Recognition:

- 12-month recognition of company on Brookgreen webpage with active link to your company website and onsite Corporate Partner listing on the Wall of Honor
- Recognition in the Brookgreen Journal (our Annual Report) and annual ad in local newspapers thanking Corporate Partners.
- Corporate event sponsors will be featured on the event page of the sponsored event along with related printed materials and on-site signage at the event.

Brookgreen Gardens welcomes over 375,000 visitors each year, publishes the Brookgreen Garden Path Newsletter, which is mailed to Brookgreen Gardens' 43,000 plus households; email blasts to more than 25,000 subscribers; and on our website and through social media reaching over 128,000 followers.

Exclusivity:

- Invitations to Corporate Partners events and exhibition preview receptions.
- Eligibility to purchase additional Nights of a Thousand Candles tickets at the discounted members' rate.
- Eligibility for one corporate function at discounted rate or no rental fee (subject to availability).

Corporate Membership Cards allow unlimited admission for your team.

- Free admission for up to 4 guests when accompanied by cardholder presenting the card at the admissions plaza during regular Garden hours.

Corporate Leader \$20,000

- 200 Gardens Passes
- 2 President's Council memberships
- 10 Corporate membership cards
- 30 Nights of a Thousand Candles tickets
- Rental fee waived for up to 200 guests for one corporate function (subject to availability)

Recognized as a Corporate Leader sponsor of **three (3)** events of your choice (see next page)

Corporate Benefactor \$10,000

- 100 Gardens Passes
- 1 President's Council memberships
- 8 Corporate membership cards
- 20 Nights of a Thousand Candles tickets
- Rental fee waived for up to 100 guests for one corporate function (subject to availability)

Recognized as a Corporate Benefactor sponsor of **two (2)** events of your choice.

Corporate Patron \$5,000

- 50 Gardens Passes
- 1 President's Council memberships
- 6 Corporate membership cards
- 15 Nights of a Thousand Candles tickets
- Rental fee reduced by 20% for one corporate function (subject to availability)

Recognized as a Corporate Patron sponsor of one event of your choice

Corporate Supporter \$2500

- 35 Gardens Passes
- 8 Corporate membership cards
- 12 Nights of a Thousand Candles tickets
- Rental fee reduced by 20% for one corporate function (subject to availability)

Recognized as a Corporate Patron sponsor of one event of your choice

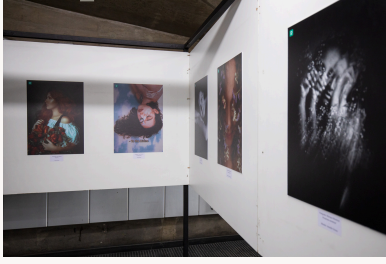
Corporate Contributor \$1,000

- 20 Gardens Passes
- 5 Corporate membership cards
- 6 Nights of a Thousand Candles tickets

Corporate Associate \$500

- 10 Gardens Passes
- 3 Corporate membership cards
- 4 Nights of a Thousand Candles tickets

Sponsorship Opportunities



Art Exhibits

Rotating indoor exhibitions of sculpture and other works of art are on view at the Rosen Galleries throughout the year. The estimated attendance is 10,000- 20,000.

Summer Exhibit- Summer Light

Lighted displays throughout the Gardens with a variety of live entertainment performances and dining. Attendance over this event season is estimated at 20,000 - 25,000.



Harmony In Nature

Promoting physical and mental well-being through health and wellness activities within the serene environment of Brookgreen. Programs include Yoga, guided walks, Zumba, Tai Chi and meditation.

Fall Tribute Concert Series

This five-night concert series feature the greatest hits of legends through unparalleled musical experience. Average attendance is 600 per event night.



Harvest Home Weekend

Two full days of entertainment and activities for the entire family that includes scarecrow-building, a hay bale maze, storytelling and and pumpkin painting. Average attendance is 2,000- 2,500 per day.

Night of a Thousand Candles

This premier festival of lights features thousands of hand-lit candles and holiday lights glow as musicians perform. Several dining options and our signature Lighting of the Trees each evening. Attendance to this event season is estimated at 70,000-75,000.



Education Programs and Garden Symposium

Annual programs (exhibits, lectures, and performances) including Black History Month, Gullah Geechee Junkanoo, and Read Across America. The Symposium showcases expert horticulturists for a day filled with inspiration, education, and hands-on experiences. The total enrollment in all education events is estimated 20,000 annually.

BROOKGREEN *Gardens*

CORPORATE EVENTS

As a Corporate Partner, you are eligible to host private events at Brookgreen.

A team of creative and experienced professionals will assist you in planning exceptional private events at Brookgreen Gardens, including meetings, retreats, client receptions, holiday parties, and employee picnics.



LEONARD PAVILLION



LOW COUNTRY CENTER



SCULPTURE GARDEN



HOLLIDAY COTTAGE

Whether you are hosting a group of 10 or 200, let us design the perfect event in one of our beautiful settings.

Coming soon!

In early 2026, the new Purdy Center will open, transforming Brookgreen Gardens. The Conservatory will offer event space for small gatherings or large events with clear story windows, and accordion doors opening onto an expansive courtyard.



CONTACT DETAILS: Tina Christensen, Manager of Philanthropy



+843-979-6076



tchristensen@brookgreen.org

BROOKGREEN *Gardens*[®]

Brookgreen Gardens is a 501(c)(3) nonprofit organization composed of 9100 acres with two main components; the Huntington Sculpture and Botanical Garden and the surrounding 7000 acres of conserved forest that supports both planned conservation and defense of endangered species.

Beginning in 1930, philanthropist Archer M. Huntington and his wife, sculptor Anna Hyatt Huntington, purchased the land that stretched from the Waccamaw River to the Atlantic Ocean and created the first public sculpture garden in America. In 1932, the Huntingtons opened Brookgreen Gardens to the public, having established it as both a nature preserve and an opportunity to preserve sculptures, including Anna's work as one of the first female acclaimed figurative sculptor.

ART

Supporting the largest most comprehensive collection of American figurative sculpture in the country displayed in a stunning garden setting, three galleries and a visible storage and research facility.



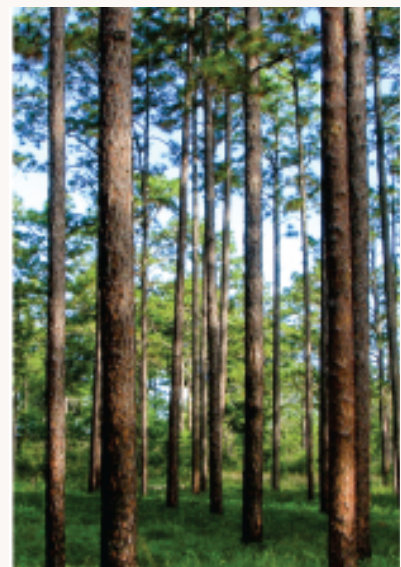
NATURE

The floral jewel of South Carolina's coast, the 9,127-acre property preserves the historic site's natural and cultivated landscape while offering a breathtaking public ornamental botanical garden.



HISTORY

The thousands of acres in Brookgreen's Lowcountry History and Wildlife Preserve are rich with evidence of the native plants and animals of the South Carolina as well as the rice plantations of the 1800's.



Brookgreen Gardens is one of the few institutions in the United States to earn accreditation from the American Alliance of Museums and the Association of Zoos and Aquariums, as well as being designated a National Historic Landmark and being listed on the National Register of Historic Places.